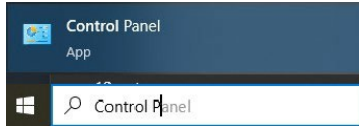


User Setup of NRCS Customization for Autodesk Civil 3D 2024 Software Windows 10 CCE

About

Support files & tools for use with Autodesk Civil 3D 2024 software in support of the National NRCS CAD standards are deployed separately from Civil 3D 2024. After the NRCS customization files are installed, user customization settings need to be completed within the login for each individual user.

Do this first: In Windows Search, search for and open the Control Panel app.



Click *Programs*, then click *Programs and Features*. Filter the “Publisher” column as shown below. Confirm that Civil 3D 2024 and all add-ons/extensions affiliated with Civil 3D have been installed. If any of the programs that are in the red boxes are missing, the installation may have been interrupted; contact IT for assistance **before** continuing with these instructions.

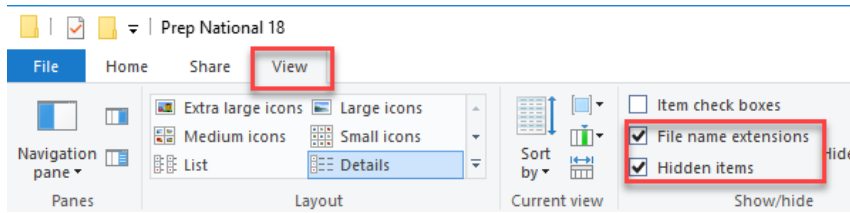
Uninstall or change a program

To uninstall a program, select it from the list and then click Uninstall, Change, or Repair.

Name	Publisher	Installed...	Size	Version
Autodesk Identity Manager	Autodesk	9/15/20...	78.5 MB	1.15.0.5
Autodesk Batch Save Utility (Standalone)	Autodesk	1/29/20...	19.1 MB	3.5.2090.0
Autodesk Single Sign On Component	Autodesk	9/15/20...	221 MB	13.8.6.1806
Autodesk Genuine Service	Autodesk	1/30/20...	329 MB	7.6.0.229
Autodesk ReCap Photo	Autodesk, Inc.	1/1/2026	443 MB	24.0.3.378
Autodesk Civil 3D 2024 - English	Autodesk, Inc.	9/15/20...	9.23 GB	13.6.2090.0
InfoWorks ICM Import/Export Plug-in 2024 f...	Autodesk, Inc.	9/15/20...	16.0 MB	4.0.27.0
Autodesk Civil Engineering Data Translator 1.4	Autodesk, Inc.	9/15/20...	67.0 MB	1.4.233.0
Autodesk AutoCAD Raster Design 2024 - Eng...	Autodesk, Inc.	9/15/20...	688 MB	24.3.61.0
Autodesk RealDWG Shared 2024	Autodesk, Inc.	9/15/20...	675 MB	24.3.202.0
Autodesk Inventor Infrastructure Modeler Plu...	Autodesk, Inc.	9/15/20...	3.61 MB	24.0.30.0
Autodesk PPK Survey 2024 for Civil 3D	Autodesk, Inc.	9/15/20...	225 MB	4.3.222.0
Autodesk Standardized Data Tool v3.0.0.2 for ...	Autodesk, Inc.	9/15/20...	68.1 MB	3.0.0.2
Autodesk InfraWorks	Autodesk, Inc.	1/30/20...	9.95 GB	24.1.5.204
Object Enabler for AutoCAD Plant 3D 2024	Autodesk, Inc.	9/15/20...	25.2 MB	15.0.6100.3
Autodesk AutoCAD 2024 VBA Enabler	Autodesk, Inc.	9/15/20...	423 KB	24.3.61.0
Autodesk Storm and Sanitary Analysis 2024.1	Autodesk, Inc.	9/15/20...	2.36 GB	13.6.323.0
Autodesk Access	Autodesk, Inc.	1/30/20...	49.0 MB	2.12.0.55
Autodesk Grading Optimization for Civil 3D 2...	Autodesk, Inc.	9/15/20...	494 MB	3.0.10.13
Data Extension for 12d 2024 for Autodesk Ci...	Autodesk, Inc.	9/15/20...	2.80 MB	13.6.12.0
Autodesk SHP Import/Export Utility 2024	Autodesk, Inc.	9/15/20...	3.75 MB	3.0.74.0
CPIXML Extension 2024 for Autodesk Civil 3D	Autodesk, Inc.	9/15/20...	158 MB	13.6.47.0
Autodesk Coordinates Transformation 2024 f...	Autodesk, Inc.	9/15/20...	204 MB	4.3.222.0
Autodesk Geotechnical Modeler 2024	Autodesk, Inc.	9/15/20...	13.1 MB	3.0.228.0
IFC 4.3 Extension Update 2 for Autodesk Civil ...	Autodesk, Inc.	9/15/20...	2.00 MB	13.6.170.0
Autodesk Infrastructure Parts Editor 2024	Autodesk, Inc.	9/15/20...	2.37 GB	24.0.2.188
Autodesk Advance Steel 2024 Object Enabler	Autodesk, Inc.	9/15/20...	442 MB	28.0.233.0
GENIO Import and Export Extension 2024 for ...	Autodesk, Inc.	9/15/20...	2.61 MB	13.6.11.0
Rail Data Exchange Extension 2024.1 for Auto...	Autodesk, Inc.	9/15/20...	6.12 MB	13.6.63.0
Autodesk ReCap	Autodesk, Inc.	1/1/2026	3.12 GB	24.1.2.421
Autodesk Revit Unit Schemas 2024	Autodesk, Inc.	1/30/20...	107 MB	24.0.3.416
OrderByLayer	DotSoft LLC	9/15/20...	520 KB	2.2.0.0
LidarTools	DotSoft LLC	9/15/20...	1.94 MB	1.0.4
AutoWblock	DotSoft LLC	9/15/20...	552 KB	2.2.0
DwgSearch	DotSoft LLC	9/15/20...	624 KB	19.0.0.0
Trimble Link Engine	Trimble Inc.	9/15/20...		2.0.37.0
Trimble Link for Autodesk® Civil 3D® 2024	Trimble Inc.	9/15/20...		19.0.1.0

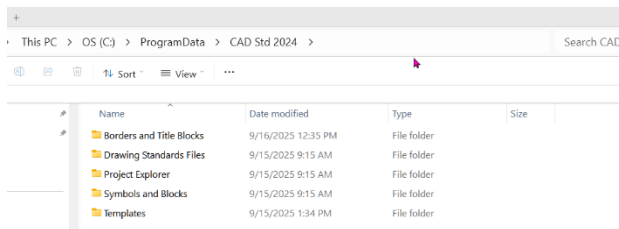
Do this second: Set Windows Explorer to show hidden folders.

In Windows Explorer click *View*. Then within *Show/hide*, checkmark *Hidden items* & *File name extensions*:

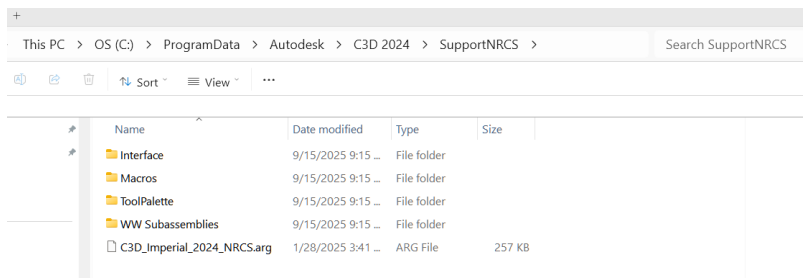


Do this third: Confirm that the NRCS Customization files have been installed.

Open Windows Explorer and *Browse to C:\ProgramData*. Confirm that the *CAD Std 2024* folder exists, and that it contains the following folders:



Browse to *C:\ProgramData\Autodesk\C3D 2024*. Confirm that the *SupportNRCS* folder exists, and that it contains the following folders/files:

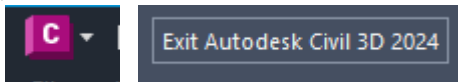


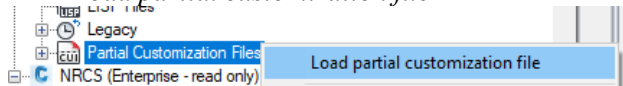
If either of those folders is missing or files/folders within either are missing, the NRCS Customization installation process was likely interrupted. Contact IT for assistance or check Software Center to retry the installation.

User Setup of Civil 3D 2024 using National NRCS deployment

Note: If a user had launched *Civil 3D 2024 Imperial* prior to the installation of the NRCS customization files, then the user will **first need to reset** Civil 3D 2024 for their login. (See Resetting AutoCAD Civil 3D instructions on the final page.)

- 1) **Launch Civil 3D 2024 Metric** via *Start... Autodesk Civil 3D 2024 - English... Civil 3D 2024 Metric*.
- 2) Refer to the “Activating Autodesk Civil 3D 2024 Network License” document, if applicable (and/or “Activating Expired Trial Autodesk Civil 3D 2024” document, if applicable).
- 2) Type *Options* [Enter] to pull up the Options dialog box. Select the Profiles tab.
 - a) Highlight <<C3D_Imperial>> and Click *Rename* and then rename it to **Original<<C3D_Imperial>>**
 - b) Click *Apply & Close*.
 - c) Click *Import...* then *Browse:* to
C:\ProgramData\Autodesk\C3D 2024\SupportNRCS
 - d) Select *Civil3D_Imperial 2024_NRCS.arg* and Click *Open*.
 - e) Rename the Profile name to <<**C3D_Imperial**>> and checkmark *Include path information*. Be sure to include the “<<” and “>>” in the name.
 - f) Click *Apply & Close*.
 - g) Click *OK* to exit the Options dialog.
- 3) Quit out of Autodesk Civil 3D 2024 by clicking Exit from the Application Menu.



- 4) Click *No* when asked to save changes to the drawings.
- 5) Launch Civil 3D 2024 **Imperial** via *Start... Autodesk Civil 3D 2024 - English... Civil 3D 2024 Imperial*
- 6) If the Autodesk Data Collection and Use window appears, you can decide whether to participate or not. Select your choice and *Click OK*.
- 7) If the TableExport2024.dll “Unsigned Executable File” warning appears, select *Always Load*.
- 8) Move your Toolspace to your preferred screen location or click on the Toolspace AutoHide and Properties to change docking, etc.
- 9) ~~Trimble Link (A – Enable, B – Register or C – Disable). Trimble Link tools can be used to transfer data between AutoCAD and Trimble surveying devices.~~
 - ~~Option A) To load the Trimble Link tool (add to the ribbon).~~
 1. ~~Type CUI, Press *Enter*~~
 2. ~~Within the Customize tab, Right-click on Partial Customization Files~~
 3. ~~Click *Load partial customization file*~~
 4. ~~Browse to C:\Users\first.last\AppData\Roaming\Autodesk\C3D 2024\enu\Support~~
 5. ~~Select *TrimbleLink.cuix* to highlight and *Open*~~
 6. ~~Click *OK* to close the CUI~~
 - ~~Option B) To register Trimble Link if you have not registered an earlier version:~~
 1. ~~Initialize a Trimble Link command from the ribbon. (The following steps will not be needed if registration has already been done.)~~
 2. ~~An *Authorize* box will appear. Click *Yes I Agree*.~~

- ~~3. Click on the link to the Trimble registration page and complete the information.~~
- ~~4. A registration key will be provided. Or use: **64251726**~~
- ~~5. Enter the registration key into the Authorization code of the Authorize Trimble Link dialog.~~
- ~~6. Click *OK*~~
- ~~7. The Trimble Link tool will be enabled. Click *OK*~~

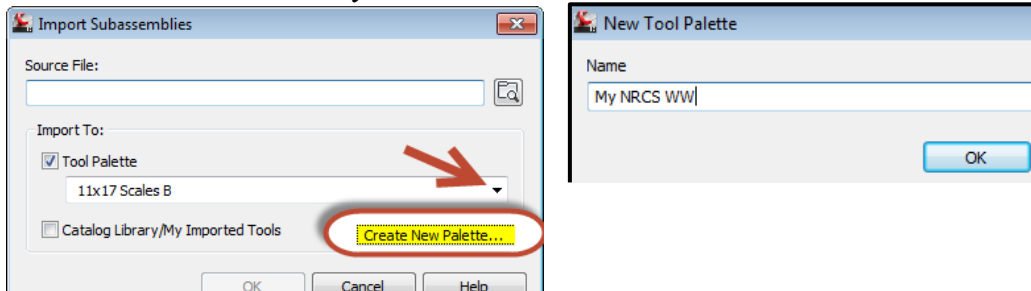
Option C) To **unload/disable** the Trimble Link tool.

1. Type *CUI*, Press *Enter*
2. Within the Customize tab, expand the Partial CUI files list in the left column.
3. Right-click on TRIMBLELINK
4. Click *Unload TRIMBLELINK.CUIX* file
5. Click *OK* to close the CUI

10) Import the NRCS Waterway subassemblies

From the Civil 3D 2024 ribbon use *Insert... Import... Import Subassemblies...*

Prior to Importing the .pkt files, select *Create New Palette* at the bottom of the dropdown list to make a new tab named ***My NRCS WW***.



Set the Tool Palette to ***My NRCS WW*** (or select an existing tab, if desired)

At *Source File*, browse to *C:\ProgramData\Autodesk\C3D 2024\Support\NRCS\WW Subassemblies*.

You can select all of the .pkt files using Control+Click. Click *Open*.

Click *Ok*.

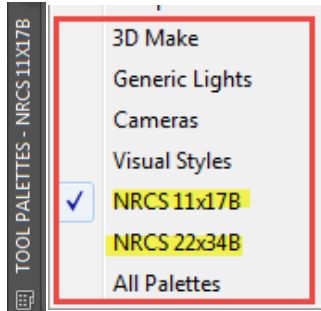
The ***My NRCS WW*** tab with the subassemblies will be added to your current Palette.

11) Exit Civil 3D Imperial and relaunch.

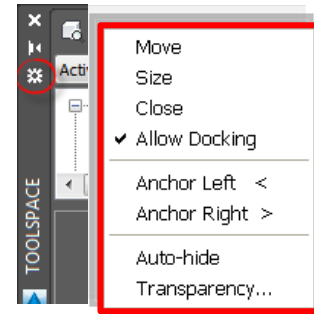
Optional: Customizing workspace menus & tool bars

To Toggle on/off the Toolspace, Properties, or Tool Palettes use the ribbon via *Home ... Palettes....*

Any of these palettes can be docked or anchored by right clicking on the palette title and clicking the anchoring or docking options.

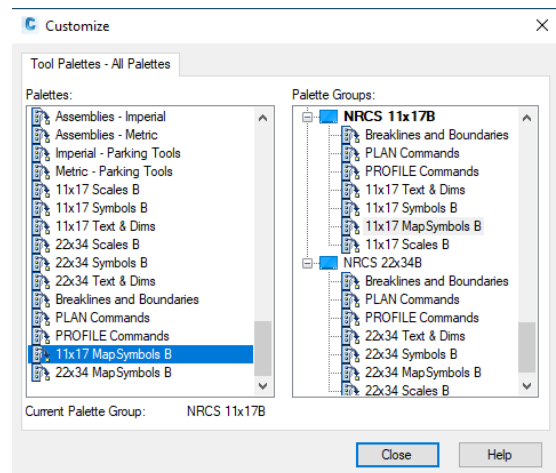
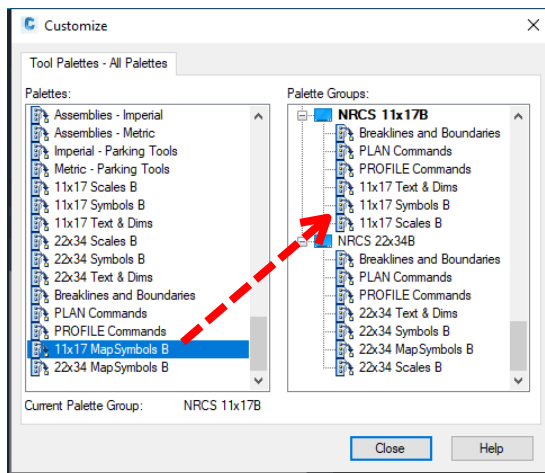


Press Ctrl+ 3 to toggle Tool Palettes on/off.
When you Right-Click on the Tool Palette bar you can switch to the NRCS 11x17 or NRCS 22x34 groupings.

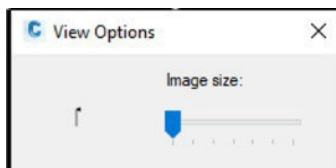


To add the “11x17 MapSymbols B” palette to the NRCS 11x17B palette grouping:

1. Expand/unhide (if auto-hidden) Tool Palettes and right-click ON the tool palette bar
2. Select “Customize Palettes...”
3. <Left-click>-drag the “11x17 MapSymbols B” palette into the **NRCS 11x17B** palette group, in between “11x17 Symbols B” and “11x17 Scales B”



4. Click *Close*
5. Right-click on the “11x17 MapSymbols B” palette tab and select *View Options...*
6. Drag the “Image size:” slider all the way to the left and click *OK*



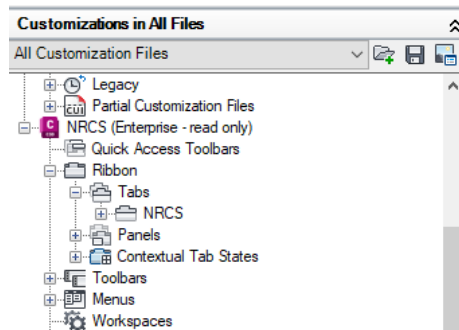
To unload an entire Partial CUI from a profile (this makes them unavailable to all workspaces in the profile):

1. Type *CUI*, Press *Enter*
2. Within the Customize tab, expand the Partial CUI files list in the left column.
3. Right-click on the Partial CUI to be removed (TRIMBLE, TOPCON, etc),
4. Click *Unload CUI file*.
5. Click *OK* to close the CUI.

To enable/disable some menus and/or toolbars in an individual workspace:

1. Type *CUI*, Press *Enter*
2. Highlight the Workspace to be customized in the left column,
3. Click *Customize Workspace* in the right column.
4. Check/Un-Checkmark toolbars or menus under the Main, Partial, or Enterprise CUI list on the left side to make them appear or not appear within the selected workspace.

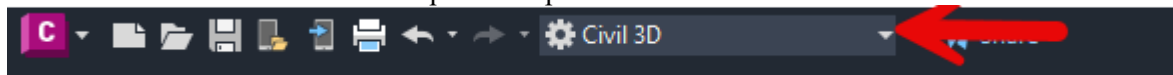
For example, if for some reason the NRCS tab isn't showing up in the ribbon, the first thing to check is if "Tabs" is checked for the NRCS (Enterprise) ribbon...



5. Click *OK* when done to save the changes and have them take effect.

To save changes to the location of the palettes in a workspace:

1. Click the Workspace Switching in the Quick Launch toolbar and click *Save Current As*. Then select the current workspace or input a new name. Click *Save*.



To switch workspaces:

1. Click the Workspace Switching in the Quick Launch toolbar and select the desired workspace.
(The software will open next time using the Workspace that is active when you exit out of CAD.)

We currently don't have a license for Magnet Tools in Maryland

IMPORTANT NOTE for Topcon MAGNET Tools Users:

The installation order of Civil 3D and Topcon MAGNET Tools is extremely important. If MAGNET Tools is/was installed before Civil 3D, the Topcon ribbon will be present, but the commands will not work.

MAGNET Tools must be uninstalled prior to installing Civil 3D 2024, then reinstalled after.

After installation of MAGNET Tools, upon first launch of Civil 3D 2024, the following prompt will appear, and the Topcon tab will be present in the ribbon.

To apply AutoCAD as the default app for .dwg and .dwt file types:

1. Type in the search bar...Control Panel
2. Select Programs>Default Programs
3. The Apps>Default apps window appears. In the search file type, enter .dwg, select the dwg file location below the search and scroll to the bottom and select “choose an app on your PC”
4. Navigate to the following location:
C:/Program Files/Autodesk/AutoCAD 2024 and select “acad.exe” and then OPEN

Complete steps 3 and 4 for .dwt file types

For Reference Only:

NRCS Custom Options settings for Autodesk Civil 3D 2024 on Windows 10

These are settings changes that the NRCS Customization has included:

Type *Options* [Enter] to pull up the Options dialog box. Select the Files tab. Add the following settings using the Browse or Add buttons if these are not already preset:

Support File Search Path (in addition to default paths)

C:\ProgramData\Autodesk\C3D 2024\SupportNRCS\Macros

C:\ProgramData\Autodesk\C3D 2024\SupportNRCS\Interface

Trusted Locations...

C:\ProgramData\Autodesk\C3D 2024\SupportNRCS\Macros\...

C:\ProgramData\Autodesk\ApplicationPlugins\...

Customization files...

Main Customization file...

C:\User\{user.name}\appdata\roaming\autodesk\c3d 2024\enu\support\c3d

Enterprise Customization file...

C:\ProgramData\Autodesk\C3D 2024\SupportNRCS\Interface\nrcs_c3d.cuix

Template Settings... Drawing Template File Location...

C:\ProgramData\CAD Std 2024\Templates

Template Settings... Sheet Set Template File Location...

C:\ProgramData\CAD Std 2024\Templates

Template Settings... Default Template File Name for QNEW...

C:\programdata\cad std 2024\templates\nrcsc3d2024(11x17)r1.dwt

Tool Palettes File Locations...

C:\Users\{user.name}\appdata\roaming\autodesk\c3d 2024\enu\support\toolpalette

C:\programdata\autodesk\c3d 2024\supportnrcs\toolpalette\text_blocks_b

C:\programdata\autodesk\c3d 2024\supportnrcs\toolpalette\nrcs_lines

Temporary Drawing File Location...

C:\Users\{user.name}\appdata\local\temp\

Temporary External Reference File Location...

C:\Users\{user.name}\appdata\local\temp\

Click OK to have the changes take effect.

Resetting Autodesk Civil 3D 2024 settings for a User

If a user has previously launched Civil 3D 2024 prior to the installation of the NRCS customization files, then the user will first need to **reset** Civil 3D 2024 for their user login.

Reset Civil 3D 2024 user profile the easy way:

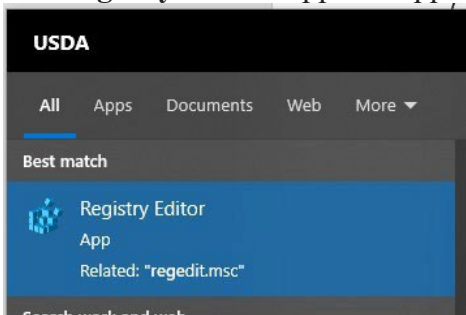
1. Click *Start... Autodesk Civil 3D 2024 - English... Reset settings to Default...*
2. At the Reset Settings – Backup Screen you can click **Reset custom settings** unless you know of a need to back them up.
3. At the confirm screen click *OK*.
4. Then Civil 3D launches as plain AutoCAD 2024.
5. Quit out and redo your user customization.

Or

Reset Civil 3D 2024 user profile manually:

Log on to the computer as that user.

1. In the Start menu “Type here to search” box, start typing **regedit**
2. The **Registry Editor** App will appear as a “best match”. Click to open the app.



NRCS computers allow this **regedit** change *without* needing an administrator.

3. In the Registry Editor, browse to the following key and delete it:
HKEY_CURRENT_USER\Software\Autodesk\AutoCAD\R24.3\ACAD-7100:409
5. Close the Registry Editor.
6. Using Windows Explorer, browse to and delete the following user's application folders:
C:\Users\<user>\AppData\Roaming\Autodesk\C3D 2024
C:\Users\<user>\AppData\Local\Autodesk\C3D 2024