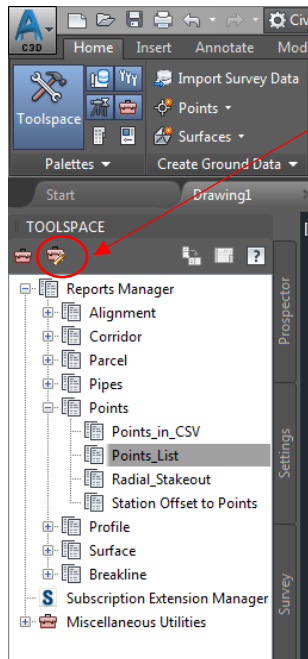


PROBLEM: Reports Manager – Execute File Does Not Exist

SOLUTION: Change path for macro in Toolbox Editor

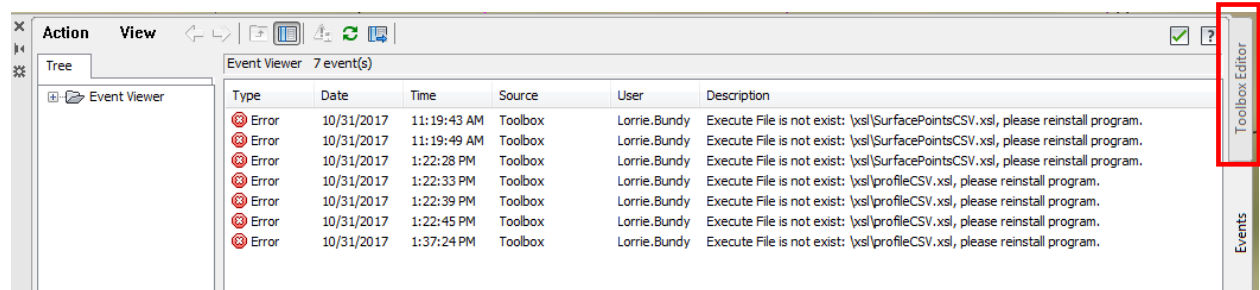
3/22/2019

1. Open Toolspace. Click on Toolbox tab. Expand Points | Points Path. Click on Toolbox Editor icon, or the Panorama may appear with error message under Event tab. Change tab to Toolbox Editor.

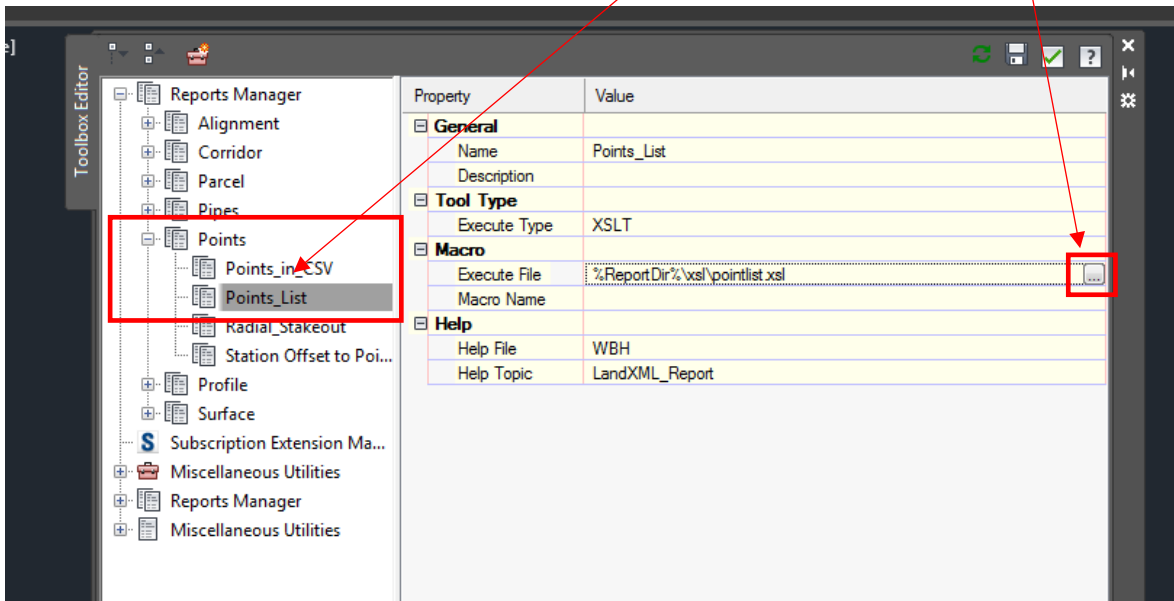


Toolspace Editor icon

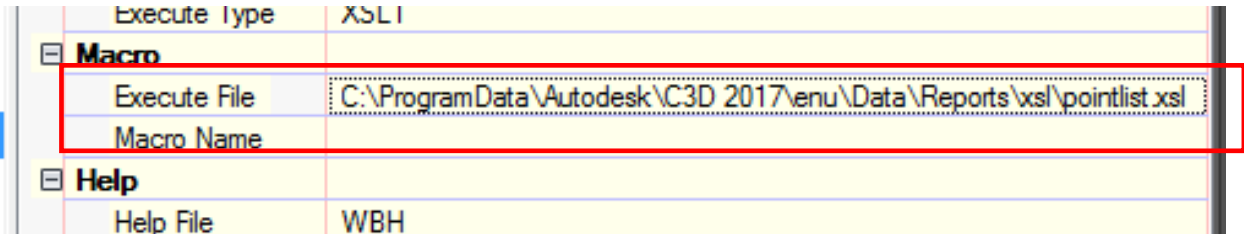
Change Tab to Toolbox Editor



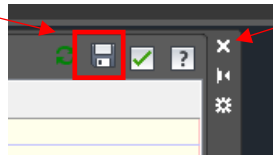
- Expand Reports Manager>Expand Points>select Points_List. Click on Macro | Execute File far right to bring up navigate window.



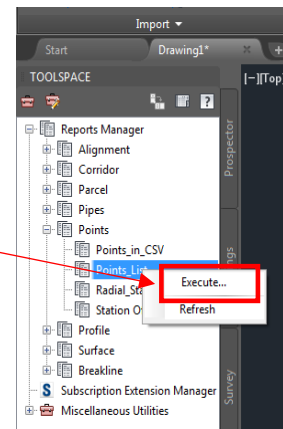
- Navigate to proper location to reset path as shown below.



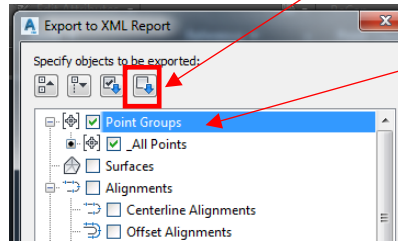
- Click on SAVE button, top right of Panorama window. Click X to close window.



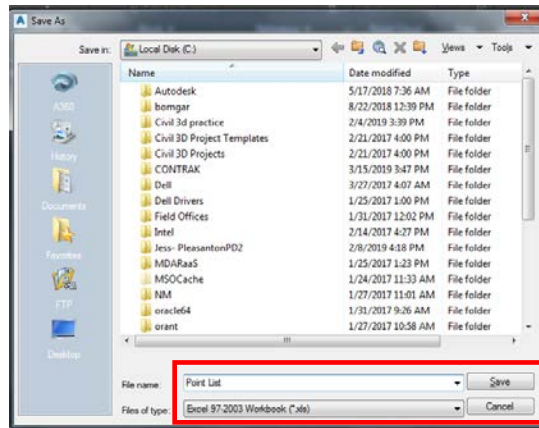
- Now goto Toolspace and expand Reports Manager. Right click on Point_List>Execute



- Window will pop up “Export to XML Report.” Uncheck all and then Check “Point Groups.”



- Click OK
- Save As file location (make sure file type is .xls)



- Below is what should show as your point list. You can change any of the information as needed.

Point Report
Project Name: Drawing1.dwg
Report Date: 3/22/2019 3:10:05 PM
Client:
Project Description:
Prepared by:

Point Report
Project: Drawing1.dwg
 Total COGO Points: 104

Number	Northing (ft)	Easting (ft)	Elevation (ft)	Description
ip-base	742082.82	1590937.3	357.31	NA
2	741927.6	1590926.63	360.61	IP-FPNS
3	742391.57	1591033.32	361.13	IP-FPNS
4	741810.26	1591310.5	345.12	IP-FPNS
5	741821.57	1591228.15	347.77	IP-HB2